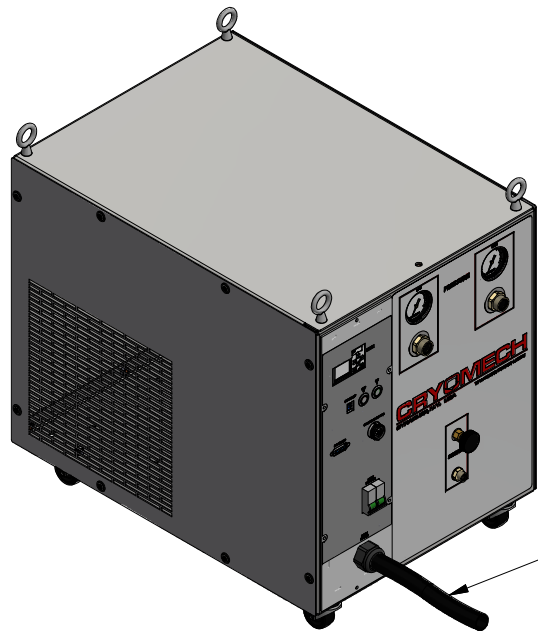
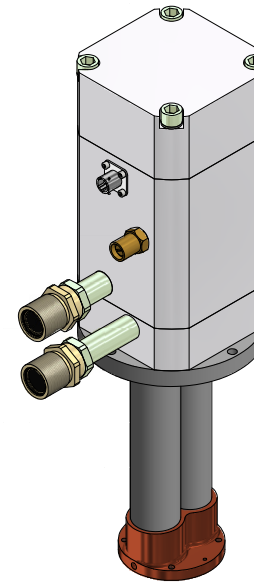
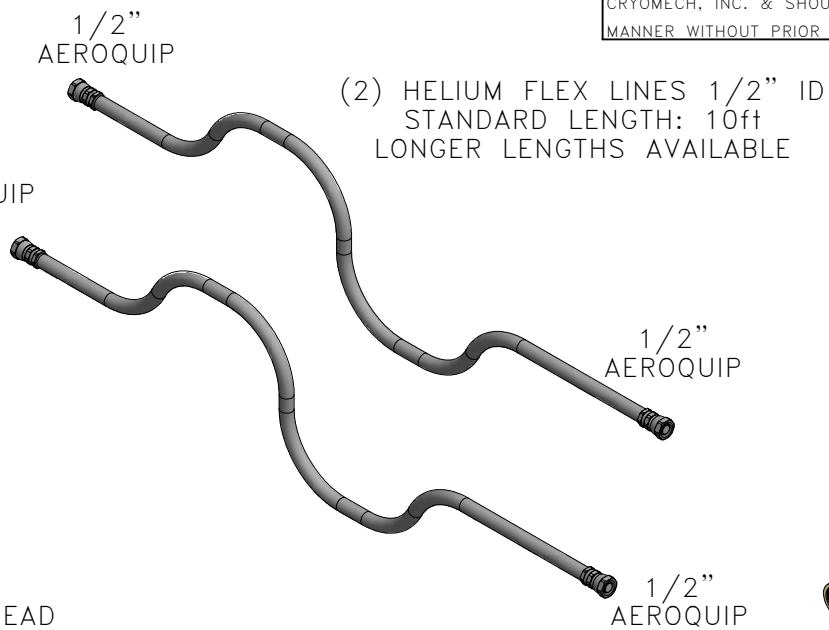


ALL INFORMATION CONTAINED IN THIS DOCUMENT SHOULD BE USED FOR REFERENCE PURPOSES ONLY & ARE SUBJECT TO CHANGE WITHOUT PRIOR NOTIFICATION. ALSO, THIS DOCUMENT IS CONSIDERED PROPRIETARY & THE SOLE PROPERTY OF CRYOMECH, INC. & SHOULD NOT BE REPRODUCED IN ANY MANNER WITHOUT PRIOR WRITTEN APPROVAL.

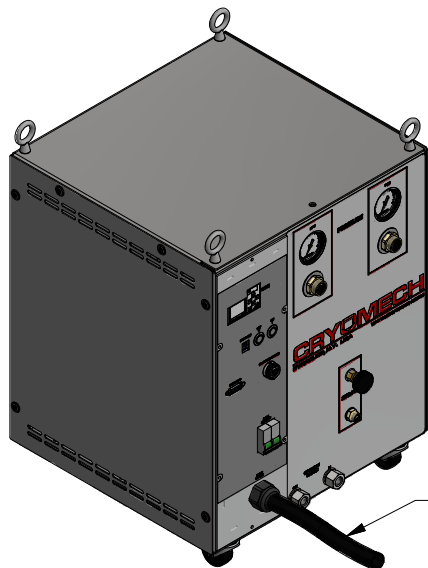


CP103 COMPRESSOR PACKAGE (AIR COOLED)

POWER CORD



PT60 COLD HEAD



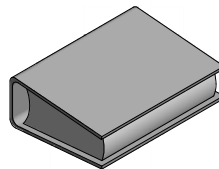
CP103 COMPRESSOR PACKAGE (WATER COOLED)

POWER CORD

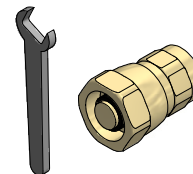
COLDHEAD MOTOR CORD (SAME LENGTH AS FLEX LINES)



MANUAL



TOOL KIT



THIRD ANGLE PROJECTION		CRYOMECH, INC	
		113 FALSO DRIVE SYRACUSE, N.Y. 13211 Tel: (315)455-2555 Fax:(315)455-2544	
ALL DIMENSIONS ARE IN INCHES			
TOLERANCES: FRACTIONS ±1/32 DECIMALS .XXX=±.005 .XX =±.01 .X=±.1			
ANGLES ±.5° ALLOVER FINISH 25 Ra			
CONCENTRICITY .005 TOTAL INDICATOR RUN OUT			
PERPENDICULAR ±.002 (UNLESS OTHERWISE SPECIFIED)			
NAME: PT60 SYSTEM DRAWING			
DWG #: PT60 SYSTEM		SHT 1 OF 1	
MATERIAL: AS STATED			
DWN BY: BMR		DATE: 26SEP06	SCALE: TO FIT
DWG SIZE: A			
1ST CHK: AO	DATE: 15NOV06	2ND CHK: RED	DATE: 15NOV06
CUST: -		BTA: -	

ECN	ZONE	REV	DESCRIPTION	DATE
3940	-	A	CP100 COMPRESSORS REPLACE CP800's	16MAR17
1297	-	-	INITIAL RELEASE	15NOV06