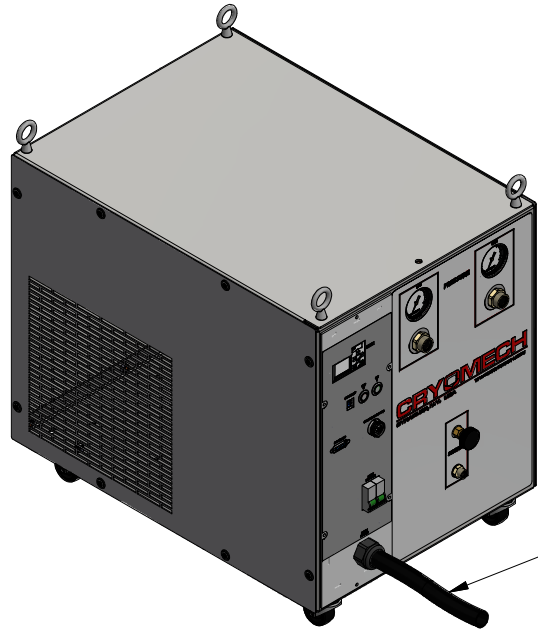


ALL INFORMATION CONTAINED IN THIS DOCUMENT SHOULD BE USED FOR REFERENCE PURPOSES ONLY & ARE SUBJECT TO CHANGE WITHOUT PRIOR NOTIFICATION. ALSO, THIS DOCUMENT IS CONSIDERED PROPRIETARY & THE SOLE PROPERTY OF CRYOMECH, INC. & SHOULD NOT BE REPRODUCED IN ANY MANNER WITHOUT PRIOR WRITTEN APPROVAL.

B

B



1/2" AEROQUIP

1/2" AEROQUIP

(2) HELIUM FLEX LINES 1/2" ID
STANDARD LENGTH: 10ft
OTHER LENGTHS AVAILABLE

1/2" AEROQUIP

1/2" AEROQUIP

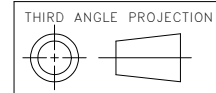
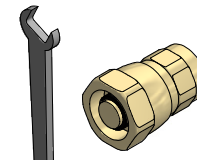
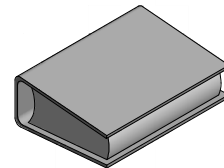
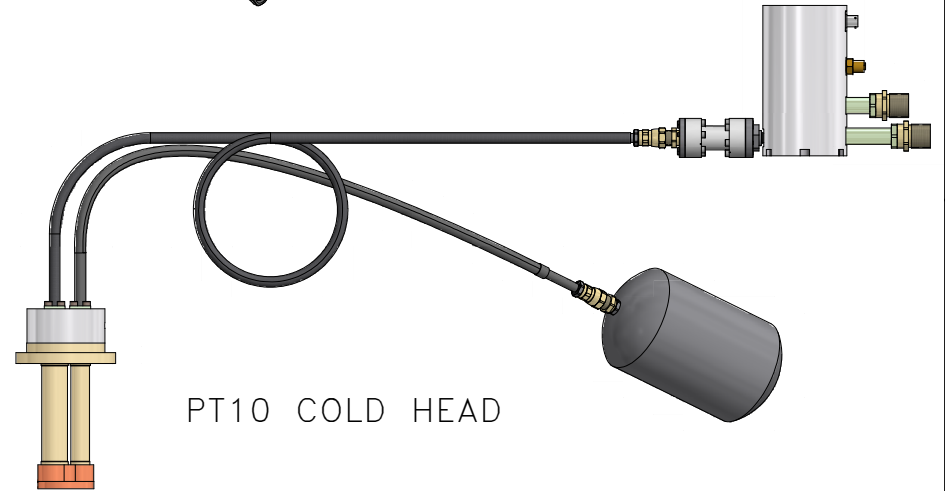
POWER CORD

A

A



COLDHEAD MOTOR CORD (SAME LENGTH AS FLEX LINES)



CRYOMECH, INC
113 FALSO DRIVE SYRACUSE, N.Y. 13211
Tel: (315)455-2555 Fax:(315)455-2544

ALL DIMENSIONS ARE IN INCHES
TOLERANCES: FRACTIONS ±1/32 DECIMALS XXX=±.005 XX =±.01 X=±.1
ANGLES ±.5° ALLOVER FINISH 25 Ra
CONCENTRICITY .005 TOTAL INDICATOR RUN OUT
PERPENDICULAR ±.002 (UNLESS OTHERWISE SPECIFIED)

NAME: PT10 SYSTEM DRAWING			
DWG #: PT10 SYSTEM		SHT 1 OF 1	
MATERIAL: AS STATED			
DWN BY: BMR		DATE: 23AUG07	SCALE: TO FIT
1ST CHK: RED		DATE: 24AUG07	2ND CHK: AO
DATE: 24AUG07		DATE: 24AUG07	
CUST: -		BTA: -	

ECN	ZONE	REV	DESCRIPTION	DATE
3940	-	A	CP100 COMPRESSORS REPLACE CP800's	16MAR17
1442	-	-	INITIAL RELEASE	23AUG07

2

1