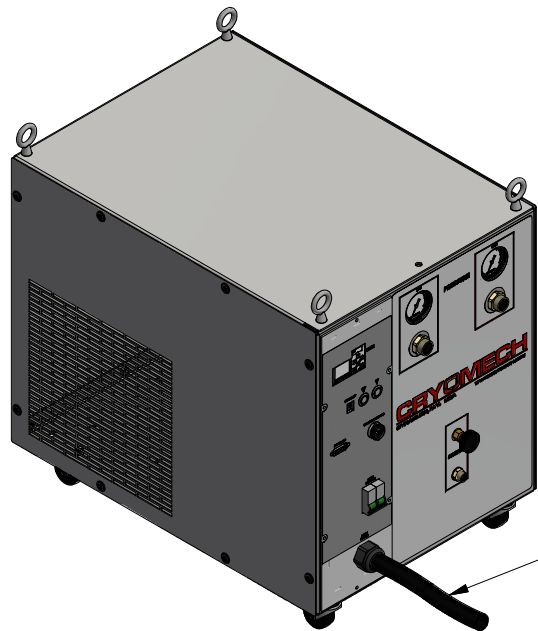
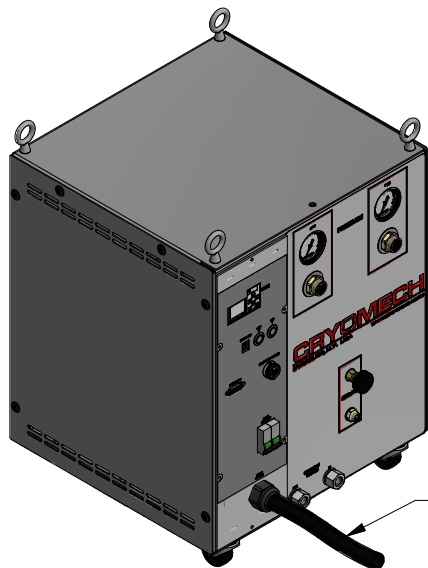


ALL INFORMATION CONTAINED IN THIS DOCUMENT SHOULD BE USED FOR REFERENCE PURPOSES ONLY & ARE SUBJECT TO CHANGE WITHOUT PRIOR NOTIFICATION. ALSO, THIS DOCUMENT IS CONSIDERED PROPRIETARY & THE SOLE PROPERTY OF CRYOMECH, INC. & SHOULD NOT BE REPRODUCED IN ANY MANNER WITHOUT PRIOR WRITTEN APPROVAL.



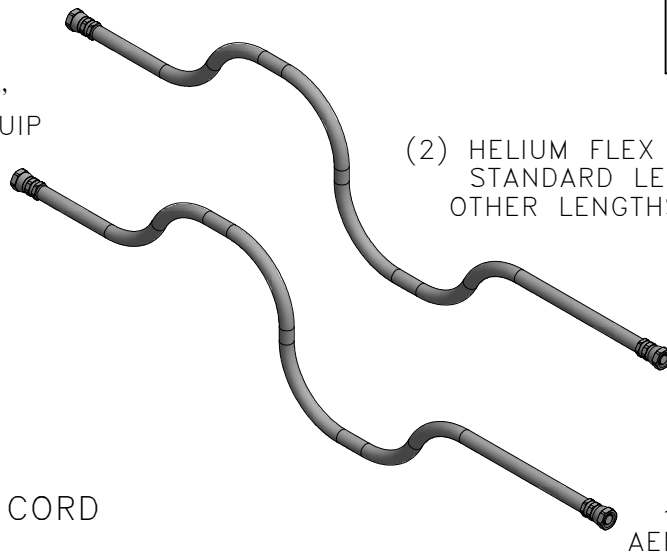
CP101 COMPRESSOR PACKAGE (AIR COOLED)



CP101 COMPRESSOR PACKAGE (WATER COOLED)

1/2" AEROQUIP

1/2" AEROQUIP



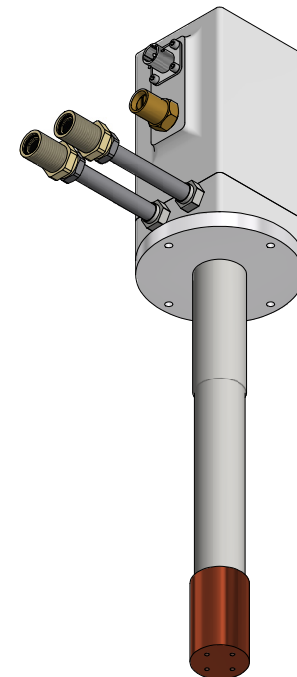
(2) HELIUM FLEX LINES 1/4" ID  
STANDARD LENGTH: 10ft  
OTHER LENGTHS AVAILABLE

1/4" AEROQUIP

1/4" AEROQUIP

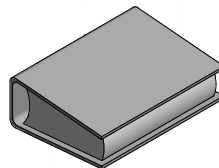
POWER CORD

COLDHEAD MOTOR CORD (SAME LENGTH AS FLEX LINES)

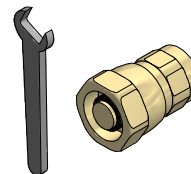


AL10 COLD HEAD

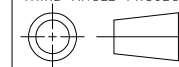
MANUAL



TOOL KIT



THIRD ANGLE PROJECTION



**CRYOMECH, INC**

113 FALSO DRIVE SYRACUSE, N.Y. 13211  
Tel: (315)455-2555 Fax:(315)455-2544

ALL DIMENSIONS ARE IN INCHES  
TOLERANCES: FRACTIONS ±1/32 DECIMALS XXX=±.005 XX =±.01  
ANGLES ±.5° ALLOVER FINISH 25 Ra  
CONCENTRICITY .005 TOTAL INDICATOR RUN OUT  
PERPENDICULAR ±.002 (UNLESS OTHERWISE SPECIFIED)

NAME: AL10 CRYOREFRIGERATOR

DWG #: AL10 SYSTEM

SHT 1 OF 1

MATERIAL: AS STATED

DWN BY: BMR DATE: 06JUN07

SCALE: TO FIT

DWG SIZE: A

1ST CHK: RED DATE: 06JUL07

2ND CHK: AO DATE: 10JUL07

CUST:

BTA: BTA-AL10

ECN	ZONE	REV	DESCRIPTION	DATE
3940	-	A	CP100 COMPRESSORS REPLACE CP800's	16MAR17
1406	-	-	INITIAL RELEASE	06JUN07