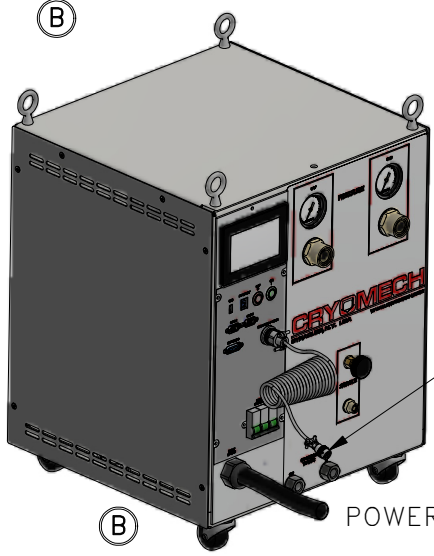
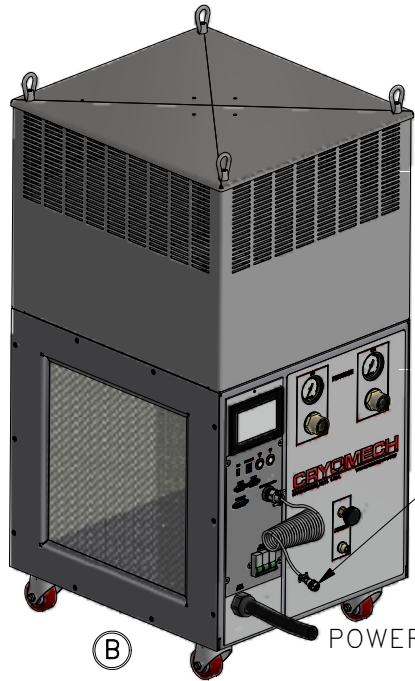


ALL INFORMATION CONTAINED IN THIS DOCUMENT SHOULD BE USED FOR REFERENCE PURPOSES ONLY & ARE SUBJECT TO CHANGE WITHOUT PRIOR NOTIFICATION. ALSO, THIS DOCUMENT IS CONSIDERED PROPRIETARY & THE SOLE PROPERTY OF CRYOMECH, INC. & SHOULD NOT BE REPRODUCED IN ANY MANNER WITHOUT PRIOR WRITTEN APPROVAL.



CPA2850 COMPRESSOR PACKAGE (WATER COOLED)



CPA2850 COMPRESSOR PACKAGE (AIR COOLED)

3/4" AEROQUIP

3/4" AEROQUIP

COLD HEAD MOTOR CORD (SAME LENGTH AS FLEX LINES)

POWER CORD

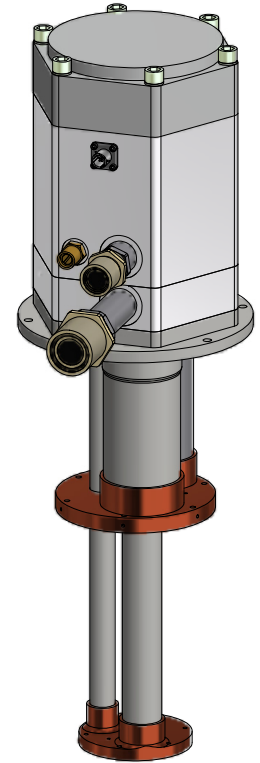
(2) HELIUM FLEX LINES STANDARD LENGTH: 10ft OTHER LENGTHS AVAILABLE

3/4" ID

1/2" AEROQUIP

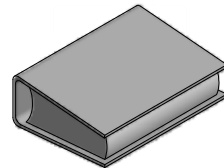
3/4" ID

3/4" AEROQUIP

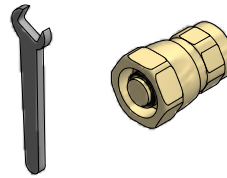


PT805 COLD HEAD

MANUAL



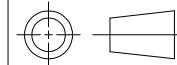
TOOL KIT



COLD HEAD MOTOR CORD (SAME LENGTH AS FLEX LINES)

POWER CORD

THIRD ANGLE PROJECTION



CRYOMECH, INC

113 FALSO DRIVE SYRACUSE, N.Y. 13211
Tel: (315)455-2555 Fax:(315)455-2544

ALL DIMENSIONS ARE IN INCHES
TOLERANCES: FRACTIONS ±1/32 DECIMALS XXX=±.005 XX=±.01 X=±.1
ANGLES ±.5° ALLOVER FINISH 25 Ra
CONCENTRICITY .005 TOTAL INDICATOR RUN OUT
PERPENDICULAR ±.002 (UNLESS OTHERWISE SPECIFIED)

NAME: PT805 CPA2800 CRYOREFRIGERATOR

DWG #: PT805 CPA2800 SYSTEM

SHT 1 OF 1

MATERIAL: AS STATED

DWN BY: BMR DATE: 08MAY08

SCALE: TO FIT DWG SIZE: A

1ST CHK: AO DATE: 08MAY08

2ND CHK: NLO DATE: 08MAY08

CUST: -

BTA: BTA-PT805

ECN	ZONE	REV	DESCRIPTION	DATE
3745	-	B	UPDATED COMPRESSOR PACKAGES	26MAY16
3072	A2	A	ADDED AIR COOLED COMPRESSOR	08MAY13
1599	-	-	INITIAL RELEASE	08MAY08