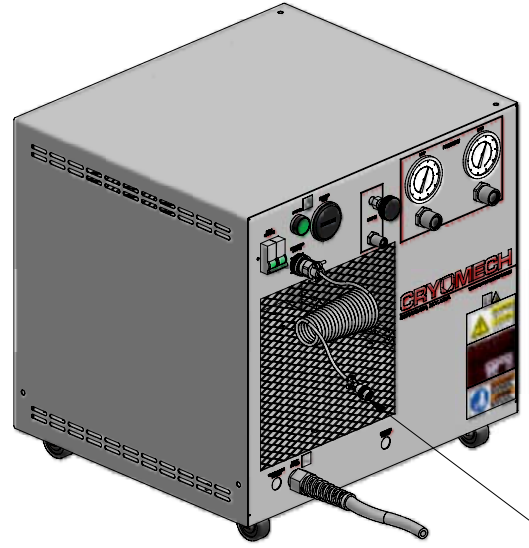
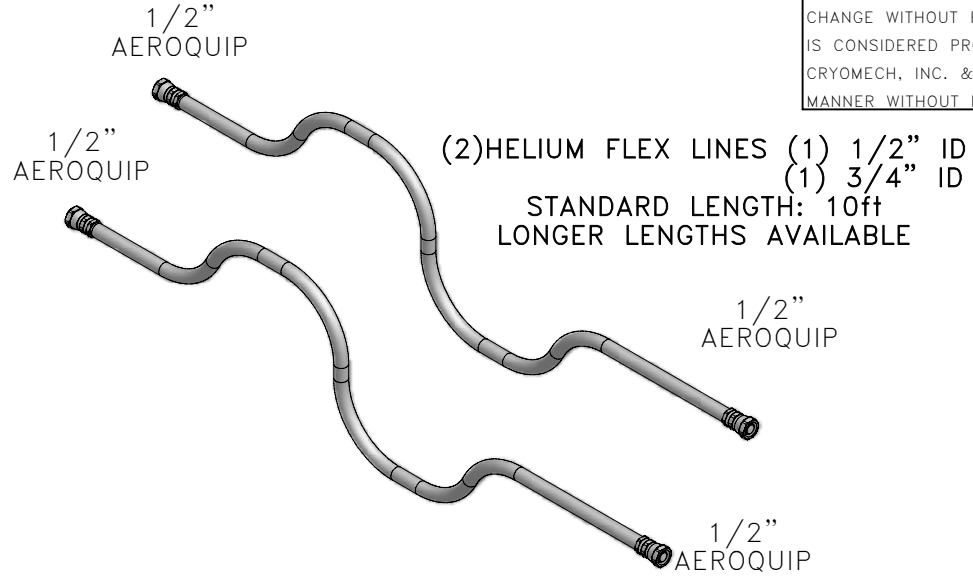


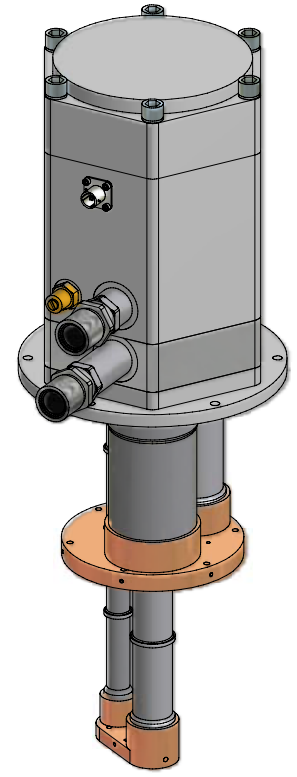
ALL INFORMATION CONTAINED IN THIS DOCUMENT SHOULD BE USED FOR REFERENCE PURPOSES ONLY & ARE SUBJECT TO CHANGE WITHOUT PRIOR NOTIFICATION. ALSO, THIS DOCUMENT IS CONSIDERED PROPRIETARY & THE SOLE PROPERTY OF CRYOMECH, INC. & SHOULD NOT BE REPRODUCED IN ANY MANNER WITHOUT PRIOR WRITTEN APPROVAL.



POWER CORD
CP830 COMPRESSOR PACKAGE
(AIR COOLED)



(2) HELIUM FLEX LINES (1) 1/2" ID
(1) 3/4" ID
STANDARD LENGTH: 10ft
LONGER LENGTHS AVAILABLE



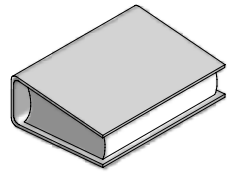
PT803 COLD HEAD



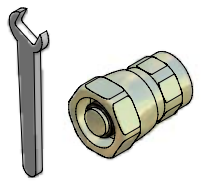
POWER CORD
CP830 COMPRESSOR PACKAGE
(WATER COOLED)

COLD HEAD
MOTOR CORD
(SAME LENGTH
AS FLEX LINES)

MANUAL



TOOL KIT



THIRD ANGLE PROJECTION		CRYOMECH, INC 113 FALSO DRIVE SYRACUSE, N.Y. 13211 Tel: (315)455-2555 Fax:(315)455-2544

ALL DIMENSIONS ARE IN INCHES
 TOLERANCES: FRACTIONS ±1/32 DECIMALS XXX=±.005 XX =±.01
 ANGLES ±.5° ALLOVER FINISH 25 Ra
 CONCENTRICITY .005 TOTAL INDICATOR RUN OUT
 PERPENDICULAR ±.002 (UNLESS OTHERWISE SPECIFIED)

NAME: PT803 CRYOREFRIGERATOR			
DWG #: PT803 SYSTEM		SHT 1 OF 1	
MATERIAL: AS STATED			
DWN BY: AO	DATE: 29JUL09	SCALE: TO FIT	DWG SIZE: A
1ST CHK: RED DATE: 29JUL09		2ND CHK: CW DATE: 29JUL09	
CUST:		BTA:	

1926	-	-	INITIAL RELEASE	29JUL09
ECN	ZONE	REV	DESCRIPTION	DATE