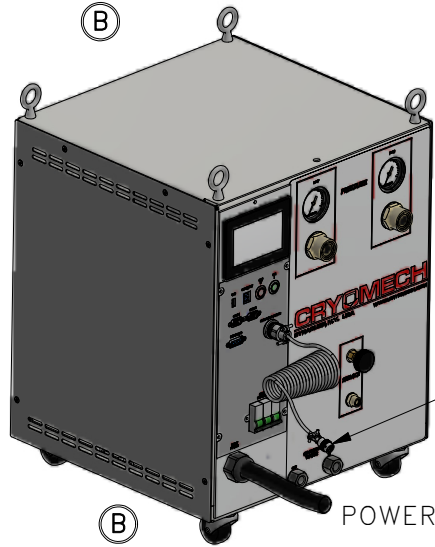
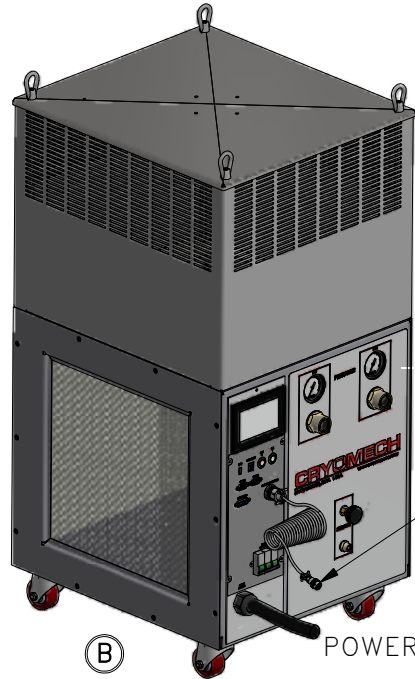


ALL INFORMATION CONTAINED IN THIS DOCUMENT SHOULD BE USED FOR REFERENCE PURPOSES ONLY & ARE SUBJECT TO CHANGE WITHOUT PRIOR NOTIFICATION. ALSO, THIS DOCUMENT IS CONSIDERED PROPRIETARY & THE SOLE PROPERTY OF CRYOMECH, INC. & SHOULD NOT BE REPRODUCED IN ANY MANNER WITHOUT PRIOR WRITTEN APPROVAL.

(2) HELIUM FLEX LINES
STANDARD LENGTH: 10ft
OTHER LENGTHS AVAILABLE



CPA2800 COMPRESSOR PACKAGE
(WATER COOLED)



CPA2800 COMPRESSOR PACKAGE
(AIR COOLED)

COLD HEAD
MOTOR CORD
(SAME LENGTH
AS FLEX LINES)

POWER CORD

POWER CORD

3/4" AEROQUIP

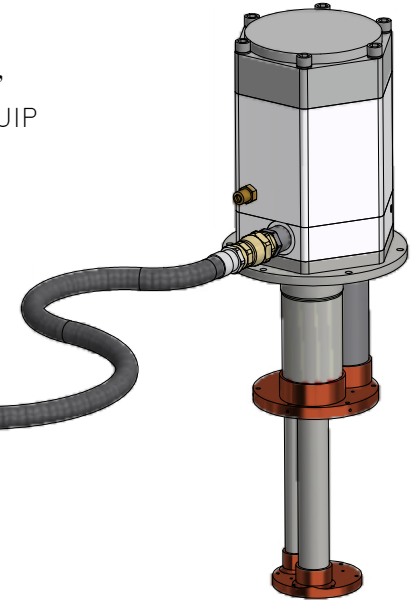
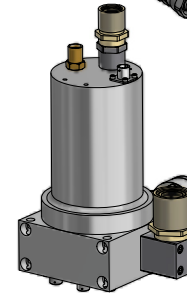
3/4" AEROQUIP

3/4" ID

3/4" ID

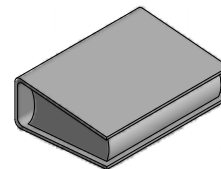
1/2" AEROQUIP

3/4" AEROQUIP

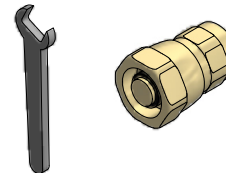


PT405-RM COLD HEAD

MANUAL

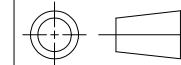


TOOL KIT



COLD HEAD
MOTOR CORD
(SAME LENGTH
AS FLEX LINES)

THIRD ANGLE PROJECTION



CRYOMECH, INC

113 FALSO DRIVE SYRACUSE, N.Y. 13211
Tel: (315)455-2555 Fax:(315)455-2544

ALL DIMENSIONS ARE IN INCHES
TOLERANCES: FRACTIONS ±1/32 DECIMALS XXX=±.005 XX=±.01 X=±.1
ANGLES ±.5° ALLOVER FINISH 25 Ra
CONCENTRICITY .005 TOTAL INDICATOR RUN OUT
PERPENDICULAR ±.002 (UNLESS OTHERWISE SPECIFIED)

NAME: PT405-RM CPA2800 CRYOREFRIGERATOR

DWG #: PT405-RM CPA2800 SYSTEM SHT 1 OF 1

MATERIAL: AS STATED

DWN BY: BMR DATE: 14AUG07 SCALE: TO FIT DWG SIZE: A

1ST CHK: RED DATE: 21AUG07 2ND CHK: AO DATE: 21AUG07

CUST: - BTA: -

ECN	ZONE	REV	DESCRIPTION	DATE
3745	-	B	UPDATED COMPRESSOR PACKAGES	26MAY16
3072	-	A	ADDED AIR COOLED COMPRESSOR	21MAY13
1436	-	-	INITIAL RELEASE	14AUG07