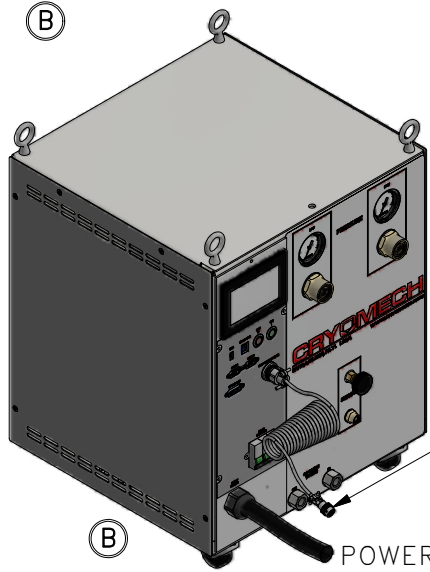
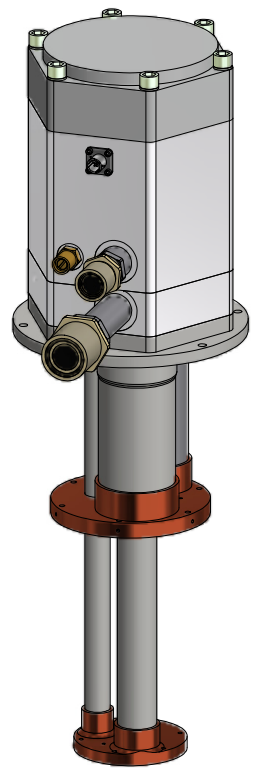
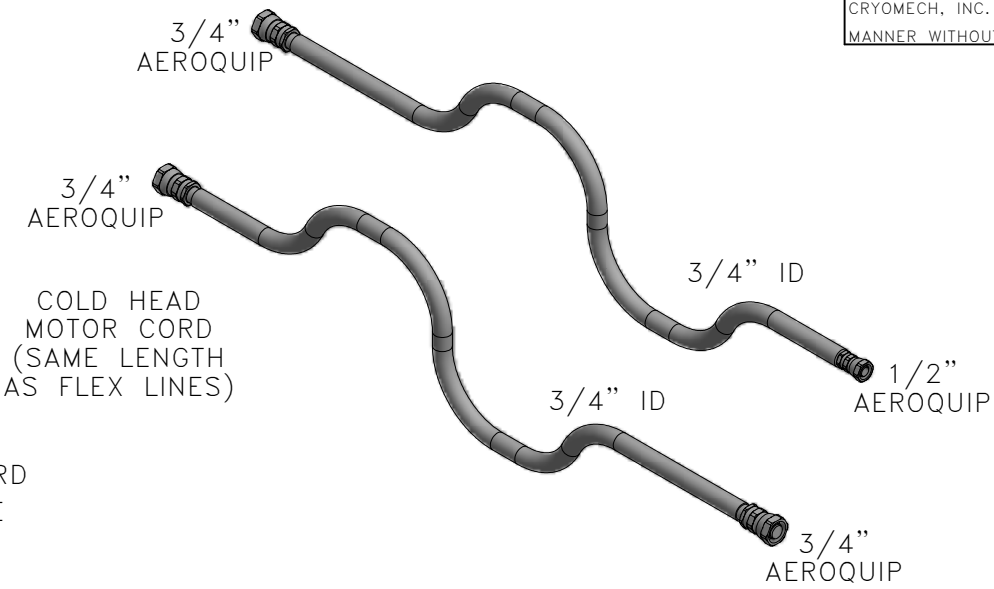


1
 ALL INFORMATION CONTAINED IN THIS DOCUMENT SHOULD BE USED FOR REFERENCE PURPOSES ONLY & ARE SUBJECT TO CHANGE WITHOUT PRIOR NOTIFICATION. ALSO, THIS DOCUMENT IS CONSIDERED PROPRIETARY & THE SOLE PROPERTY OF CRYOMECH, INC. & SHOULD NOT BE REPRODUCED IN ANY MANNER WITHOUT PRIOR WRITTEN APPROVAL.

2
 (2) HELIUM FLEX LINES
 STANDARD LENGTH: 10ft
 OTHER LENGTHS AVAILABLE



(B) POWER CORD
 CPA2850 COMPRESSOR PACKAGE
 (WATER COOLED)



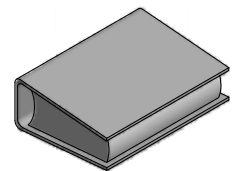
PT405 COLD HEAD



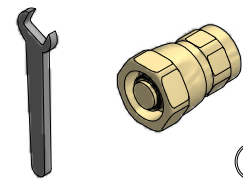
(B) POWER CORD
 CPA2850 COMPRESSOR PACKAGE
 (AIR COOLED)

COLD HEAD
 MOTOR CORD
 (SAME LENGTH
 AS FLEX LINE)

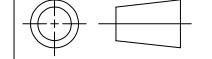
MANUAL



TOOL KIT



THIRD ANGLE PROJECTION



CRYOMECH, INC
 113 FALSO DRIVE SYRACUSE, N.Y. 13211
 Tel: (315)455-2555 Fax:(315)455-2544

ALL DIMENSIONS ARE IN INCHES
 TOLERANCES: FRACTIONS ±1/32 DECIMALS XXX=±.005 XX=±.01 X=±.1
 ANGLES ±.5° ALLOVER FINISH 25 Ra
 CONCENTRICITY .005 TOTAL INDICATOR RUN OUT
 PERPENDICULAR ±.002 (UNLESS OTHERWISE SPECIFIED)

NAME: PT405 CPA2800 CRYOREFRIGERATOR

DWG #: PT405 CPA2800 SYSTEM SHT 1 OF 1

MATERIAL: AS STATED

DWN BY: BMR DATE: 14AUG07 SCALE: TO FIT DWG SIZE: A

1ST CHK: RED DATE: 21AUG07 2ND CHK: AO DATE: 21AUG07

CUST: - BTA: -

ECN	ZONE	REV	DESCRIPTION	DATE
3745	-	B	UPDATED COMPRESSOR PACKAGES	26MAY16
3072	-	A	ADDED AIR COOLED COMPRESSOR	21MAY13
1436	-	-	INITIAL RELEASE	14AUG07