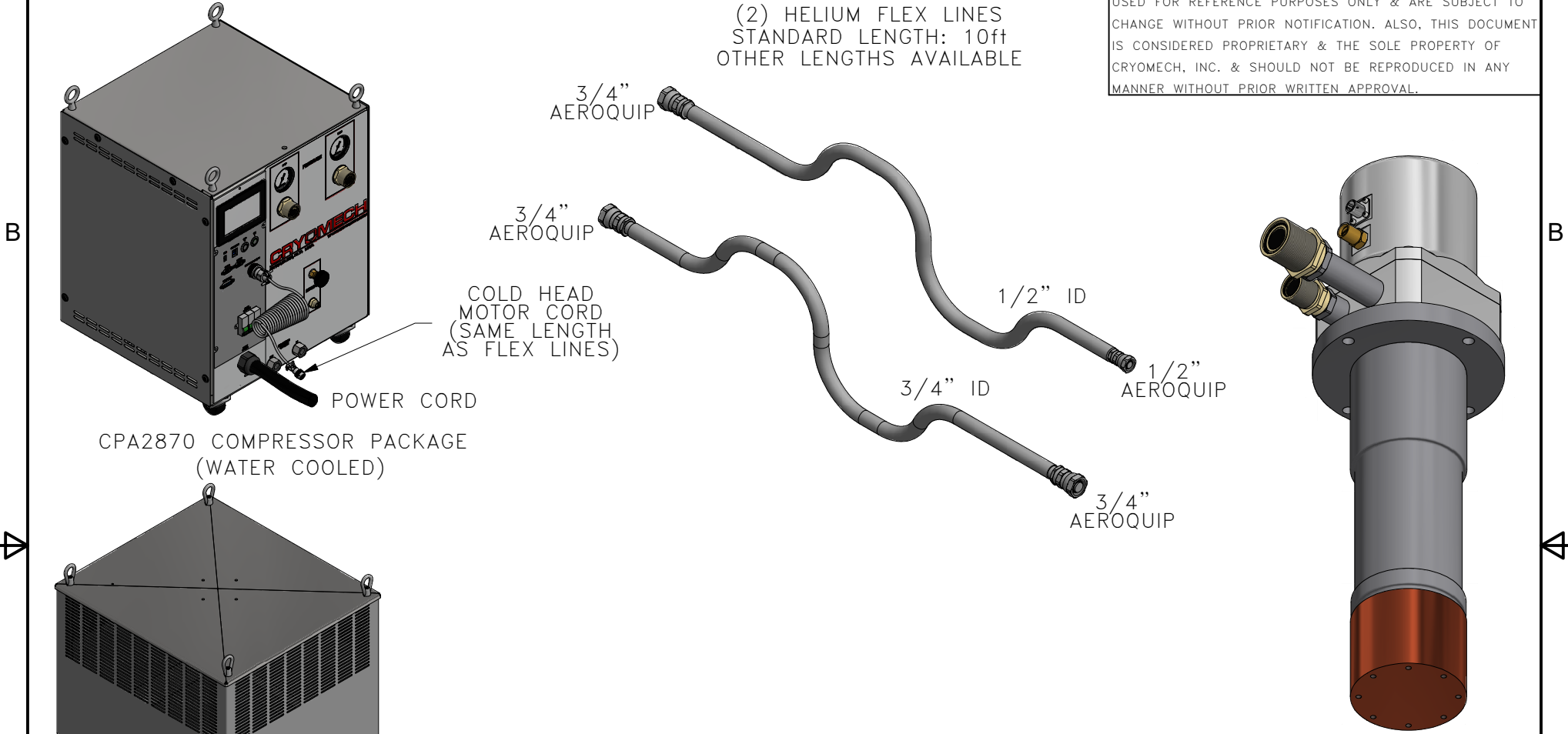


ALL INFORMATION CONTAINED IN THIS DOCUMENT SHOULD BE USED FOR REFERENCE PURPOSES ONLY & ARE SUBJECT TO CHANGE WITHOUT PRIOR NOTIFICATION. ALSO, THIS DOCUMENT IS CONSIDERED PROPRIETARY & THE SOLE PROPERTY OF CRYOMECH, INC. & SHOULD NOT BE REPRODUCED IN ANY MANNER WITHOUT PRIOR WRITTEN APPROVAL.

(2) HELIUM FLEX LINES  
STANDARD LENGTH: 10ft  
OTHER LENGTHS AVAILABLE



COLD HEAD MOTOR CORD  
(SAME LENGTH AS FLEX LINES)

POWER CORD

CPA2870 COMPRESSOR PACKAGE  
(WATER COOLED)

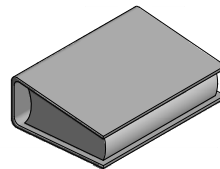
COLD HEAD MOTOR CORD  
(SAME LENGTH AS FLEX LINES)

POWER CORD

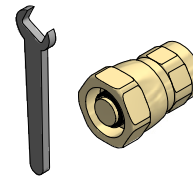
CPA2870 COMPRESSOR PACKAGE  
(AIR COOLED)

AL330 COLD HEAD

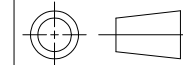
MANUAL



TOOL KIT



THIRD ANGLE PROJECTION



**CRYOMECH, INC**

113 FALSO DRIVE SYRACUSE, N.Y. 13211  
Tel: (315)455-2555 Fax:(315)455-2544

ALL DIMENSIONS ARE IN INCHES  
TOLERANCES: FRACTIONS  $\pm 1/32$  DECIMALS  $XXX = \pm 0.005$   $XX = \pm 0.01$   $X = \pm 0.1$   
ANGLES  $\pm 5^\circ$  ALLOVER FINISH 25 Ra  
CONCENTRICITY .005 TOTAL INDICATOR RUN OUT  
PERPENDICULAR  $\pm 0.002$  (UNLESS OTHERWISE SPECIFIED)

NAME: AL330 CPA2800 CRYOREFRIGERATOR

DWG #: AL330 CPA2800 SYSTEM

SHT 1 OF 1

MATERIAL: AS STATED

DWN BY: CJS DATE: 28NOV16

SCALE: TO FIT

DWG SIZE: A

1ST CHK: EP DATE: 08DEC16

2ND CHK: PB DATE: 08DEC16

CUST: -

BTA: -

3873	-	-
ECN	ZONE	REV

INITIAL RELEASE  
DESCRIPTION

28NOV16  
DATE